



2018

JOIN US FOR
NINE WEEKS OF
SUMMER FUN!

SUPER SUMMER ADVENTURES

2018 SUPER SUMMER ADVENTURES

Camps are for children entering 1st through 7th grade in fall 2018. Each session requires a separate fee.

Camps run Monday - Thursday, 9 a.m. to noon, 12:30 to 3:30 p.m. or 9 a.m. to 3:30 p.m. Plan to bring a lunch if you are staying all day. Classes are held at the museum except where noted. All camps have size limitations, so be sure and register your child early before the camp fills up. Wear comfortable clothes and shoes. Please plan to arrive early on the first day so you can sign in and find your classroom. Parents, you are welcome to accompany your child into his or her classroom and meet the instructor.



Look for the Adventure Bus icon. These classes are held offsite!

CAMP PRICING

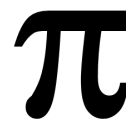
Super Summer Adventure Camp pricing varies depending on the length of a class, where it is held and the size of the class. A limited number of scholarships are offered for families who qualify for free and reduced lunch.

BEHAVIOR

The Super Summer Adventure teaching staff strive to provide a happy, safe, spirited summer of learning and enrichment for all ages. To ensure this expectation is honored, all camp participants are required to sign a behavior contract at the time of enrollment.

CAMP SCHOLARSHIPS

The museum has a limited number of scholarship opportunities available. Scholarship levels are based on a family's eligibility for free and reduced lunch. Limit 2 classes per summer. For more information, please call (509) 888-6241.



REGISTRATION INFORMATION

Ways to Register:

- Call 509-888-6240 to pay by Visa or MasterCard.
- Complete the registration form in the catalog & mail or return the form in person with your payment. Please do not mail cash.
- Mail to: WVMCC, 127 S. Mission St., Wenatchee, WA 98801
- Bring registration form and payment to the museum between 10 a.m. and 4 p.m. Tuesday through Saturday. All returned checks are subject to a \$20 service charge. Registration must be paid in full to reserve a spot.
- Register online at www.wenatcheevalleymuseum.org

Session 1: June 18 - 21

Session 2: June 25 - 28

No camp week of July 4th

Session 3: July 9 - 12

Session 4: July 16 - 19

Session 5: July 23 - 26

Session 6: July 30 - 2

Session 7: August 6 - 9

Session 8: August 13 - 16

Session 9: August 20 - 23

WITHDRAWAL POLICY

If you find that your child is unable to attend class, we will refund 80 percent of your registration fee until three days before class begins. No refunds will be given after that time.

MEMBER DISCOUNTS

Members of the Wenatchee Valley Museum receive a discount on all classes. A membership is a great way to support your museum, and in many cases, it pays for itself!

CLASS CHANGES/CANCELLATIONS

The museum reserves the right to cancel, combine or reschedule classes to adjust for enrollment or unforeseen circumstances. If it is necessary to cancel a class for any reason, registered participants will be informed as soon as possible and extended the opportunity to transfer to another class or receive a full refund.

PROMOTIONAL PHOTOGRAPHY

By enrolling your child in a Wenatchee Valley Museum class, you grant permission for your child to be photographed for promotional purposes, without compensation.

SESSION ONE

JUNE 18 - 21

FUN WITH MUSIC

AM - Grades 1 - 2
Enrollment cap: 10
Instructor: Wendy Hulse

A fun, playful introduction to musical concepts and instrument families through interactive songs, games, opportunities to listen to local musicians, play real instruments, and make musical crafts. Explore the fundamentals of making music with an experienced Valley Academy of Learning instructor.

\$85 non-member/\$70 member/\$50 reduced lunch/\$40 free lunch

FIBER ART

AM - Grades 3 - 7
Enrollment cap: 12
Instructors: Karen Rutherford
and Tracy Trotter

From hi-tech to historical, stretch your creativity by immersing yourself in the amazing world of fiber art. Try your hand at weaving, quilting, sewing, needlework, knitting and crocheting with an amazing variety of man-made and natural fibers. Students are encouraged to experiment and build on skills while producing beautiful objects in the form of blankets, scarves, rugs and more.

\$85 non-member/\$70 member/\$50 reduced lunch/\$40 free lunch

FLORA, FAUNA & FLIGHT IN THE WILD ALL DAY CLASS

Grades 3 - 7
Enrollment cap: 11
Instructors: Tina Nicpan-Brown
and Jeff Williams



Take a walk on the wild side, North Central Washington style, in a series of excursions that take advantage of the Foothills trail system in and around the City of Wenatchee. Destinations include Squilchuck State Park, Sage Hills and Beehive Reservoir, beautiful places where the city recedes and the beauty of nature takes center stage. Observe plants and animals in their native habitat and learn about the "leave no trace" philosophy of visiting a natural setting.

\$200 non-member/\$170 member/\$140 reduced lunch/\$110 free lunch

POWER OF PLAY

PM - Grades 1 - 2
Enrollment cap: 10
Instructor: Jake Bullis

Engineer a giant obstacle course with cardboard, giant parachute, foam pool toys and duct tape. Build long tunnels, open-air castles, stage a fun (and soft) medieval melee complete with handmade costumes and heraldry.

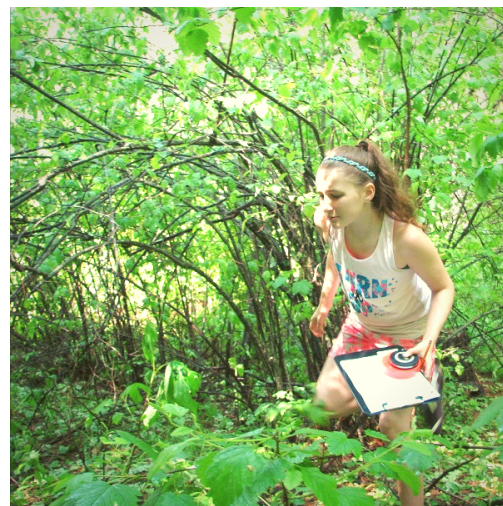
\$85 non-member/\$70 member/\$50 reduced lunch/\$40 free lunch

FIBER ART

PM - Grades 3 - 7
Enrollment cap: 12
Instructors: Karen Rutherford
and Tracy Trotter

Repeat of morning class. From hi-tech to historical, stretch your creativity by immersing yourself in the amazing world of fiber art. Try your hand at weaving, quilting, sewing, needlework, knitting and crocheting with an amazing variety of man-made and natural fibers. Students are encouraged to experiment and build on skills while producing beautiful objects in the form of blankets, scarves, rugs and more.

\$85 non-member/\$70 member/\$50 reduced lunch/\$40 free lunch



Adventure Bus sponsored by:

Wild Birds Unlimited®
Nature Shop



CROSS CRUB

AM - Grades 1 - 2
Enrollment cap: 10
Instructor: Tina Nicpan-Brown

Create fun (and delicious) food including cow chips, dirty bath water, worms in mud, dirt clods, snake guts and terrible tacos. Come join us for a yucky good time.

\$85 non-member/\$70 member/\$50 reduced lunch/\$40 free lunch

YOUNG WRITER'S CAMP

AM - Grades 3 - 5
Enrollment cap: 10
Instructor: Jeff Williams

Filled with tons of activity, imagination and fun – students in this class will immerse themselves in the power of the short story while learning literary analysis and techniques. The class is designed to engage passionate young readers with in-depth, age-appropriate guided discussions and challenge young writers to craft a story of their own.

\$85 non-member/\$70 member/\$50 reduced lunch/\$40 free lunch

RASPBERRY PI CAMP

AM - Grades 5 - 7
Enrollment cap: 6
Instructors: Karen Rutherford and Lara Hays

Discover the basics of circuitry and programming language using Raspberry Pi. Students then apply what they learned by connecting ordinary objects to the internet. Create a variety of different projects including a burglar alarm and learn to control, automate, and program devices to do what you want from anywhere. Students bridge the gap between the physical world and the internet for endless project possibilities.

\$170 non-member/\$140 member/\$100 reduced lunch/\$80 free lunch

SESSION TWO

JUNE 25 - 28

SOUND ENGINEERING

PM - Grades 1 - 2
Enrollment cap: 10
Instructor: Lara Hays

Have fun with sound while creating thumb pianos, three-string strummers, marble chimes and more. Explore the science of sound and create some unique musical inventions.

\$85 non-member/\$70 member/\$50 reduced lunch/\$40 free lunch

COOKING UP CHEMISTRY

PM - Grades 3 - 5
Enrollment cap: 10
Instructor: Tina Nicpan-Brown

Turn down the heat and get ready to create edible molecular masterpieces using the power of chemistry. Investigate the physical and chemical transformations of ingredients that occur during cooking. Create oil powders, foams, fluid gels and infusions while learning how different substances and chemicals added at the right time during the cooking process can change the molecular structure of solids and liquids, transforming them into new and interesting (and edible) treats.

\$85 non-member/\$70 member/\$50 reduced lunch/\$40 free lunch

THE MAGIC OF MCCARTNEY CREEK CAMP WITH 2 OVERNIGHT STAYS

Grades 5 - 7
Enrollment cap: 11
Instructors: Sara Rolfs



Explore the unique and magical world of McCartney Creek where the dry desert of Moses Coulee disappears in the mist of cascading waterfalls, lush emerald green vegetation and the shadows of painted cliffs. Preserved and protected by the Nature Conservancy, this hidden green belt in the high desert, is a well-kept secret. Explore this beautiful place with scientists and learn about its rich history and resident flora and fauna. Paint its landscapes under the guidance of a professional artist and enjoy a sunset and sunrise like no other.

\$230 non-member/\$200 member/\$170 reduced lunch/\$140 free lunch

SESSION THREE

JULY 9 - 12

WIRE, WORKS AND WONDERS

AM - Grades 1 - 2
Enrollment cap: 10
Instructor: Jennifer Talbot

Use wire, gears and wheels to create whirling, twirling masterpieces of design. Master some basic tools and take home your inventions at the end of the week.

\$85 non-member/\$70 member/\$50 reduced lunch/\$40 free lunch

CHESS 202

AM - Grades 3 - 5
Enrollment cap: 20
Instructor: Keith Madsen

Learn new strategies, build on established skills and challenge yourself to learn new attacks and defenses in this class taught by Wenatchee Valley Chess4kidz instructor Keith Madsen. Learn about the scholar's mate attack and how to defend against it, effective use of pawns, piece balance and classic patterns. Celebrate the end of the week by participating in a chess tournament challenge to test your new skills.

\$85 non-member/\$70 member/\$50 reduced lunch/\$40 free lunch

OUT ON THE TOWN ALL DAY CAMP

Grades 5-7
Enrollment cap: 10
Instructor: Debbie Sawyer

Would you like to sample delicious food from some of our local vendors like Glaze or The Owl Soda Fountain? Want to see behind the scenes at the Liberty Theater or the Wenatchee Valley Museum and Cultural Center? Join us for fun-filled days of exploring the downtown community that makes up the heart of Wenatchee. Each day brings a new location, a new adventure and a chance to learn about our amazing community! Come prepared for the weather (sunscreen) and to walk at least a mile each day.

\$170 non-member/\$140 member/\$100 reduced lunch/\$80 free lunch

INNOVATION STATION

PM - Grades 1 - 2
Enrollment cap: 10
Instructor: Jennifer Talbot

Nurture and inspire your inner innovator in this fun and energetic hands-on exploration of science, art and outdoor activities aimed at building a future of visionary, courageous, collaborative, determined and reflective creators. Build self-confidence and boldness of vision as you explore our amazing world.

\$85 non-member/\$70 member/\$50 reduced lunch/\$40 free lunch

AMAZON ADVENTURES

PM - Grades 3 - 5
Enrollment cap: 10
Instructor: Nicky Clennon

Explore a typical woodland trail in the Amazon complete with the plants, animals, people, tastes, smells and textures of the jungle. Enjoy daily explorations that challenge the imagination, encourage exploration and build global awareness. Try new recipes, games and songs while learning about one of the most important landscapes on the planet.

\$85 non-member/\$70 member/\$50 reduced lunch/\$40 free lunch



SESSION FOUR

JULY 16 - 19

CIRCUITS & ROBOTICS

AM - Grades 1 - 2
Enrollment cap: 10
Instructor: Lara Hays

This class will explore the basics of electronics and circuits while playing with SnapCircuits and LittleBits. We'll learn about robots like Sphero, Dash and Dot, and how to program for completion of tasks and challenges.

\$85 non-member/\$70 member/\$50 reduced lunch/\$40 free lunch

EXPLORING SNAP CIRCUITS

AM - Grades 3 - 5
Enrollment cap: 10
Instructor: Jake Bullis

Develop an understanding of basic circuitry while honing the skills of inventive design. Develop problem-solving skills while learning to power motors, fans, speakers, noisemakers, LEDs and fiberoptics. Learn the vocabulary of electricity including resistors, capacitors, positive and negative. Use a multimeter to measure voltage and develop an understanding of how electricity moves.

\$85 non-member/\$70 member/\$50 reduced lunch/\$40 free lunch

SOLDERING 101

AM - Grades 5 - 7
Enrollment cap: 10
Instructors: Karen Rutherford and Tracy Trotter

Learn the basics of soldering, the technique for connecting electronic components using heat to fuse them together on a circuit board with solder wire. Learn to assemble basic circuitry on circuit boards to light up LEDs. Construct your own circuit board and learn about different electronic components and their uses.

\$85 non-member/\$70 member/\$50 reduced lunch/\$40 free lunch

FIBER ARTS

PM - Grades 1 - 2
Enrollment cap: 10
Instructor: Lara Hays

Discover the beautiful world of yarn and its many uses from weaving, creating string art, finger crocheting and more. Explore different textures and types of fibers to create beautiful art to share with family and friends.

\$85 non-member/\$70 member/\$50 reduced lunch/\$40 free lunch

MAD SCIENTIST

PM - Grades 3 - 5
Enrollment cap: 10
Instructor: Jake Bullis

Learn about science through fun and interactive projects including the study of chemical reactions, applied physics and engineering challenges.

\$85 non-member/\$70 member/\$50 reduced lunch/\$40 free lunch



SOLDERING 101

PM - Grades 5 - 7
Enrollment cap: 10
Instructors: Karen Rutherford and Tracy Trotter

A repeat from the morning class. Learn the basics of soldering, the technique for connecting electronic components using heat to fuse them together on a circuit board with solder wire. Learn to assemble basic circuitry on circuit boards to light up LEDs. Construct your own circuit board and learn about different electronic components and their uses.

\$85 non-member/\$70 member/\$50 reduced lunch/\$40 free lunch



PETITE PICASSOS

AM - Grades 1 - 2
Enrollment cap: 10
Instructor: Wendy Hulse

Learn about the techniques of famous artists like Pablo Picasso, Vincent Van Gogh and Georgia O'Keeffe and create your own masterpieces. Take short walking excursions near the museum to observe and sketch the natural world.

\$85 non-member/\$70 member/\$50 reduced lunch/\$40 free lunch

SESSION FIVE

JULY 23 - 26

PETITE PICASSOS

PM - Grades 1 - 2
Enrollment cap: 10
Instructor: Wendy Hulse

Repeat of the morning class. Learn about the techniques of famous artists like Pablo Picasso, Vincent Van Gogh and Georgia O'Keeffe and create your own masterpieces. Take short walking excursions near the museum to observe and sketch the natural world.

\$85 non-member/\$70 member/\$50 reduced lunch/\$40 free lunch

ROCKIN' THE REGION - ALL DAY CAMP

Grades 3 - 7
Enrollment cap: 11
Instructor: Sara Rolfs



From meteorites at the Douglas County Museum in Waterville to the Pioneer Village in Cashmere, check out a variety of amazing culturally and historically significant locations in North Central Washington. Every day a new direction and a new adventure!

\$230 non-member/\$200 member/\$170 reduced lunch/\$140 free lunch



LEGO MINDSTORM ROBOTICS

AM - Grades 3 - 5
Enrollment cap: 12
Instructors: Karen Rutherford,
Lara Hays and Bob Straub

The coaches from the museum's award-winning team, the Holographic Cats, will get you started with the basics of LEGO Mindstorm robot programming. Includes an introduction to competition skills, core values and task completion.

\$170 non-member/\$140 member/\$100 reduced lunch/\$80 free lunch

LEGO MINDSTORM ROBOTICS

PM - Grades 5 - 7
Enrollment cap: 12
Instructors: Karen Rutherford, Lara
Hays, Bob Straub

The coaches from the museum's award-winning team, the Holographic Cats, will get you started with the basics of LEGO Mindstorm robot programming. Includes an introduction to competition skills, core values and task completion.

\$170 non-member/\$140 member/\$100 reduced lunch/\$80 free lunch

SESSION SIX

JULY 30 - AUG 2

KITCHEN CONCOCTIONS

AM - Grades 3 - 5
Enrollment cap: 10
Instructor: Wendy Hulse

Get ready for your kids to come home and cook some yummy, healthy food after they take this class on how to create their own kitchen concoctions. Beat the heat with some fresh fruity popsicles; encourage your kids to eat garden salads with original salad dressing recipes; bake delicious chocolate chip banana muffins (with no sugar, dairy, eggs or gluten). This is the perfect cooking class to get kids started with healthy culinary habits.

\$85 non-member/\$70 member/\$50 reduced lunch/\$40 free lunch



3-D PRINTING

AM - Grades 5 - 7
Enrollment cap: 6
Instructor: Lara Hays

Develop 3D modeling and engineering fundamentals as you create unique designs on our 3D printers. Learn how to set up the 3D print process and troubleshoot 3D print jobs. Explore post-printing techniques to enhance the look of your designs.

\$170 non-member/\$140 member/\$100 reduced lunch/\$80 free lunch

GATHERING THE HARVEST ALL DAY CAMP

Grades 1 - 2
Enrollment cap: 11
Instructors: Tina Nicpan-Brown
and Jeff Williams



Take to the roads in the museum's Adventure Bus and spend the morning visiting local farms and gathering fruits and vegetables left over from the harvest. Return with your harvest by noon to spend the afternoon cooking a delicious meal with all of your gleaned goodies.

\$230 non-member/\$200 member/\$170 reduced lunch/\$140 free lunch

LEGO CHALLENGE CAMP

PM - Grades 1 - 5
Enrollment cap: 10
Instructor: Wendy Hulse

Build tall towers or colorful homes for our collection of fanciful creatures and exhibit your work in our LEGO Gallery! There will be some guided time in this class, but plenty of opportunity for free building or whatever takes your fancy.

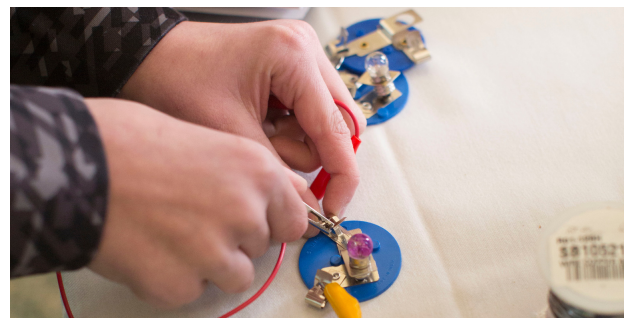
\$85 non-member/\$70 member/\$50 reduced lunch/\$40 free lunch

ELECTRONICS

PM - Grades 5 - 7
Enrollment cap: 10
Instructor: Lara Hays

Build electronic devices while learning about electricity and circuits. Learn how to solder and then program your devices. Explore graphical or text programming to control lights and sounds on playful circuit boards.

\$85 non-member/\$70 member/\$50 reduced lunch/\$40 free lunch



SESSION SEVEN

AUGUST 6 - 9

HIKE THE FOOTHILLS - AM ONLY

AM - Grades 1 - 2
Enrollment cap: 11
Instructor: Sara Rolfs



Class includes basic hiking protocol as well as nature scavenger hunts, basic botany, ecology and geology. Areas of exploration include Horse Lake, Jacobsen Preserve, Sage Hills, Castlerock, Squilchuck and Lake Clara.

\$100 non-member/\$85 member/\$65 reduced lunch/\$50 free lunch

3-D MAPMAKING

AM - Grades 3 - 5
Enrollment cap: 12
Instructor: Tina Nicpan-Brown

International boundaries are no big deal for this tactile, project-based class. Learn how to build mountains and other physical landforms to scale, color code for elevation and create a map key. Take home a beautiful, handmade display at the end of the week.

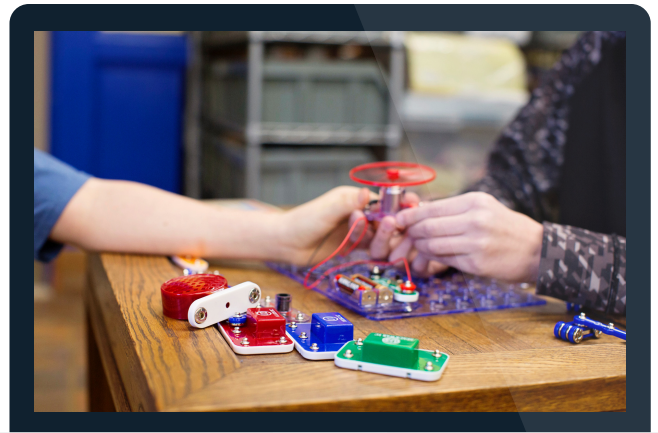
\$85 non-member/\$70 member/\$50 reduced lunch/\$40 free lunch

EXPLORING SNAP CIRCUITS

AM - Grades 5 - 7
Enrollment Cap: 10
Instructor: Jake Bullis

Develop an understanding of basic circuitry while honing the skills of inventive design. Develop problem-solving skills while learning to power motors, fans, speakers, noisemakers, LEDs and fiberoptics. Learn the vocabulary of electricity including resistors, capacitors, positive and negative. Use a multimeter to measure voltage and develop and understanding of how electricity moves.

\$85 non-member/\$70 member/\$50 reduced lunch/\$40 free lunch



LEGO CHALLENGES

PM - Grades 1 - 2
Enrollment cap: 10
Instructor: Tina Nicpan-Brown

Build tall towers or colorful homes for our collection of fanciful creatures and exhibit your work in our LEGO Gallery! There will be some guided time in this class, but plenty of opportunity for free building or whatever takes your fancy.

\$85 non-member/\$70 member/\$50 reduced lunch/\$40 free lunch

SUSTAINABLE ENERGY DESIGN

PM - Grades 3 - 5
Enrollment cap: 10
Instructor: Jeff Williams

Take on the challenge of solving the world energy crisis. Use the engineering design process to experiment with solar panels, hydroelectric, wind and natural gas power and build an efficient sustainable energy generation device.

\$85 non-member/\$70 member/\$50 reduced lunch/\$40 free lunch

PAPER ELECTRONICS

PM - Grades 5-7
Enrollment cap: 10
Instructors: Jake Bullis

Go beyond origami to the world of electronic popables! Combine wiring with storytelling and you have the idea. Fold, cut, color and wire to light up, play music, twinkle or move!

\$85 non-member/\$70 member/\$50 reduced lunch/\$40 free lunch

SESSION EIGHT

AUGUST 13 - 16

CHESS 101

AM - Grades 1 - 2
Enrollment cap: 20
Instructor: Keith Madsen

Learn piece movement, strategy and tactics like forks, pins, skewers and batteries in this beginning chess class offered by Wenatchee Valley Chess4kidz instructor Keith Madsen. Class includes coaching in life skills like teamwork, sportsmanship and goal setting. Celebrate the end of the week by participating in a chess tournament challenge to test your new skills.

\$85 non-member/\$70 member/\$50 reduced lunch/\$40 free lunch

ADVENTURES IN SPANISH

AM - Grades 2 - 5
Enrollment cap: 10
Instructor: Wendy Hulse

Learn basic Spanish phrases and vocabulary in a fun, interactive setting as you go on an imaginary journey through several Spanish-speaking countries. Explore Mexico, Spain, Peru and Cuba while collecting passport stamps and learning about each country's artists, music, food and tourist hotspots. Act out a typical scene from each of the featured countries. Prior Spanish background is not a requirement, but there will be plenty of built-in challenges for emerging bilingual speakers and gentle nurturing for those new to the language.

\$85 non-member/\$70 member/\$50 reduced lunch/\$40 free lunch

SECRET LIFE OF BREADS

AM - Grades 5 - 7
Enrollment cap: 10
Instructors: Joy Spurgeon

Enjoy a science experiment and a feast all rolled into one in this exciting culinary exploration of the science of bread making. Explore quick breads, cultural breads, yeast breads and yummy dips. Master the fundamentals of a perfect pizza dough and design your own signature sauce.

\$85 non-member/\$70 member/\$50 reduced lunch/\$40 free lunch

SLIMY SCIENCE AND COOL CHEMISTRY

PM - Grades 1 - 2
Enrollment cap: 10
Instructor: Jennifer Talbot

Mix it, stir it, heat it, cool it and see the amazing results as you combine different common household materials to create an amazing array of fun, icky, gooey science experiments. From slime to rubber eggs, this is a tactile exploration of some of the very fun, but a little gross, results of different combinations of materials that yield surprising results.

\$85 non-member/\$70 member/\$50 reduced lunch/\$40 free lunch

ADVENTURES IN SPANISH

PM - Grades 2 - 5
Enrollment cap: 10
Instructor: Wendy Hulse

Repeat of the morning class. Learn basic Spanish phrases and vocabulary in a fun, interactive setting as you go on an imaginary journey through several Spanish-speaking countries. Explore Mexico, Spain, Peru and Cuba while collecting passport stamps and learning about each country's artists, music, food and tourist hotspots. Act out a typical scene from each of the featured countries. Prior Spanish background is not a requirement, but there will be plenty of built-in challenges for emerging bilingual speakers and gentle nurturing for those new to the language.

\$85 non-member/\$70 member/\$50 reduced lunch/\$40 free lunch



SECRET LIFE OF BREADS

PM - Grades 5 - 7
Enrollment cap: 10
Instructors: Joy Spurgeon

Repeat of the morning class. Enjoy a science experiment and a feast all rolled into one in this exciting culinary exploration of the science of bread making. Explore quick breads, cultural breads, yeast breads and yummy dips. Master the fundamentals of a perfect pizza dough and design your own signature sauce.

\$85 non-member/\$70 member/\$50 reduced lunch/\$40 free lunch

CHESS 101

AM - Grades 1 - 2
Enrollment cap: 20
Instructor: Keith Madsen

Learn piece movement, strategy and tactics like forks, pins, skewers and batteries in this beginning chess class offered by Wenatchee Valley Chess4kidz instructor Keith Madsen. Class includes coaching in life skills like teamwork, sportsmanship and goal setting. Celebrate the end of the week by participating in a chess tournament challenge to test your new skills.

\$85 non-member/\$70 member/\$50 reduced lunch/\$40 free lunch



DUCT TAPE ENGINEERING

AM - Grades 3 - 5
Enrollment cap: 10
Instructor: Jennifer Talbot

Make homemade roller coasters, rockets and boats from Duct Tape enhanced with a wide variety of building materials from the museum's Makerspace. Build on your science and engineering skills while enjoying the freedom of designing your own Duct Tape project. Explore the art of tapigami while using a variety of unique textures and patterns to create a museum-worthy work of art!

\$85 non-member/\$70 member/\$50 reduced lunch/\$40 free lunch

SO YOU THINK YOU CAN COOK

AM - Grades 5 - 7
Enrollment cap: 10
Instructors: Joy Spurgeon

You are what you eat! Plan a four-course meal from appetizers to desserts using secret ingredients to make yummy treats. Take a walk to Pybus Market and buy fresh, local ingredients. Learn how to read labels and find the nutritional value in the things you eat. Bon Appetit!

\$85 non-member/\$70 member/\$50 reduced lunch/\$40 free lunch

SESSION NINE

AUGUST 20 - 23

EDIBLE STORY TIME

PM - Grades 1 - 2
Enrollment cap: 10
Instructor: Jennifer Talbot

From the Very Hungry Caterpillar by Eric Carle to Cloudy with a Chance of Meatballs by Ron Barrett, explore the many ways authors talk about delicious food while telling a story. Sample delicious food while you take a journey through a delicious, literary adventure. Write a story about your favorite food and create silly, but delicious recipes inspired by ingredients from the museum's kitchen cupboard.

\$85 non-member/\$70 member/\$50 reduced lunch/\$40 free lunch

CHESS 202

PM - Grades 3 - 5
Enrollment cap: 20
Instructor: Keith Madsen

Learn new strategies, build on established skills and challenge yourself to learn new attacks and defenses in this class taught by Wenatchee Valley Chess4kidz instructor Keith Madsen. Learn about the scholar's mate attack and how to defend against it, effective use of pawns, piece balance and classic patterns. Celebrate the end of the week by participating in a chess tournament challenge to test your new skills.

\$85 non-member/\$70 member/\$50 reduced lunch/\$40 free lunch

SO YOU THINK YOU CAN COOK

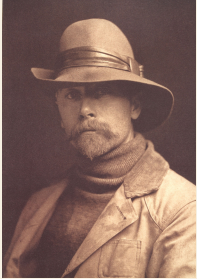
PM - Grades 5 - 7
Enrollment cap: 10
Instructors: Joy Spurgeon

Repeat of the morning class. You are what you eat! Plan a four-course meal from appetizers to desserts using secret ingredients to make yummy treats. Take a walk to Pybus Market and buy fresh, local ingredients. Learn how to read labels and find the nutritional value in the things you eat. Bon Appetit!

\$85 non-member/\$70 member/\$50 reduced lunch/\$40 free lunch

BEYOND THE FRAME: INTERIOR LIFE

OCTOBER 5TH, 2018 – MARCH 2ND, 2019



From 1907 to 1930 photographer Edward S. Curtis took on the colossal task of documenting the remaining intact Native American tribes of the American West. The resulting portfolio, *The North American Indian*, contains twenty volumes of photographs and ethnographic text.

The Wenatchee Valley Museum and Cultural Center will recognize the 150th anniversary of Edward Curtis' birth by presenting an exhibition displaying images selected from Volumes 7 and 8 of Curtis' portfolio along with interpretive text panels, an exhibit guide and relevant displays on loan from private collections.

EDWARD CURTIS PROGRAMMING

October 4, 2018

Edward S. Curtis members-only reception and Salmon Feast

October 5, 2018

First Friday free public opening: Edward S. Curtis

October 10, 2018

Rock Island Rapids of the Columbia – Talk with William Layman and Randy Lewis

November 6, 2018

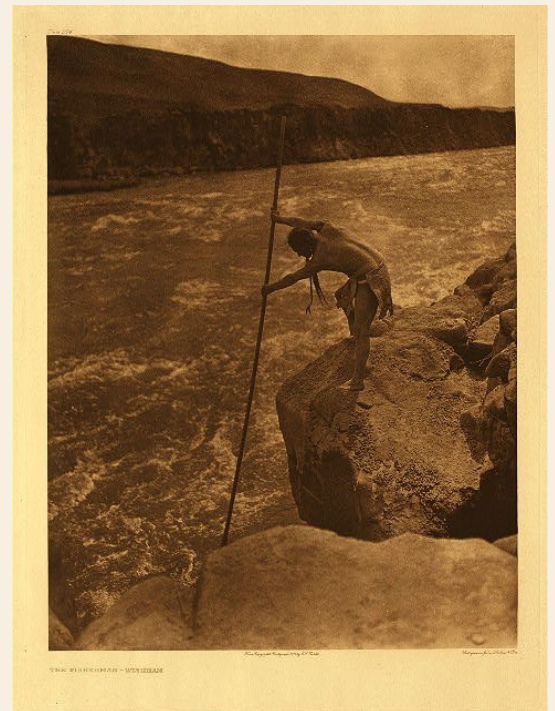
False Promises: The Lost Land of the Wenatchi screening and fishing rights update by author and historian E. Richard Hart.

November 13, 2018

Return of the Wapato: Native Foods
Emily Washines, Yakama tribal member and scholar, talks about the intrinsic link between culture and food and the heartbreaking consequences to a community when those links to the past are broken.

January 22, 2019

Story of the Wanapum People by Rex Buck, Jr.



January 24, 2019

Framing Culture in Two Takes:
Edward S. Curtis vs. Frank S. Matsura

February 1, 2019

Ceremonial Closing featuring members of the
Blue Sunset Singers of the Paschal Sherman
Indian School and Wenatchi/P'Squosa
elder Randy Lewis.

TRIBAL ELDERS LEAD PINE NEEDLE BASKET AND TULE MAT WORKSHOPS

TULE MAT WORKSHOP 10/13, 9 - 3:30PM

The museum will host an all-day weaving workshop led by Wanapum elder and master weaver Angela Buck. The workshop will feature the versatile tule, or bulrush, as raw material, to create a sitting mat that can be used for yoga, picnics or even as an insulating layer on the dining room table. Wanapum tribal elders skilled in the art of tule weaving lead the class.

Historically, the Wanapum, or River People, created houses out of mats made from the tall reed that grows abundantly in local ponds, springs and sloughs. The mats were used to cover winter log houses and summer tepees as well as mattresses, table mats, ceremonial sitting mats and burial mats.

The tule plant's unique Styrofoam-like core makes an excellent insulating material and was used by Columbia Plateau indigenous peoples for hundreds of years as a natural air-conditioning system. The plant swelled with moisture during rainy, wet times to seal gaps in the mats and form an insulating roof. On hot, dry days the reeds in the mats would shrink allowing cooling breezes to filter into the lodging.

All materials are provided and all skill levels are welcomed. Lunch is included. Cost is \$100 per person.

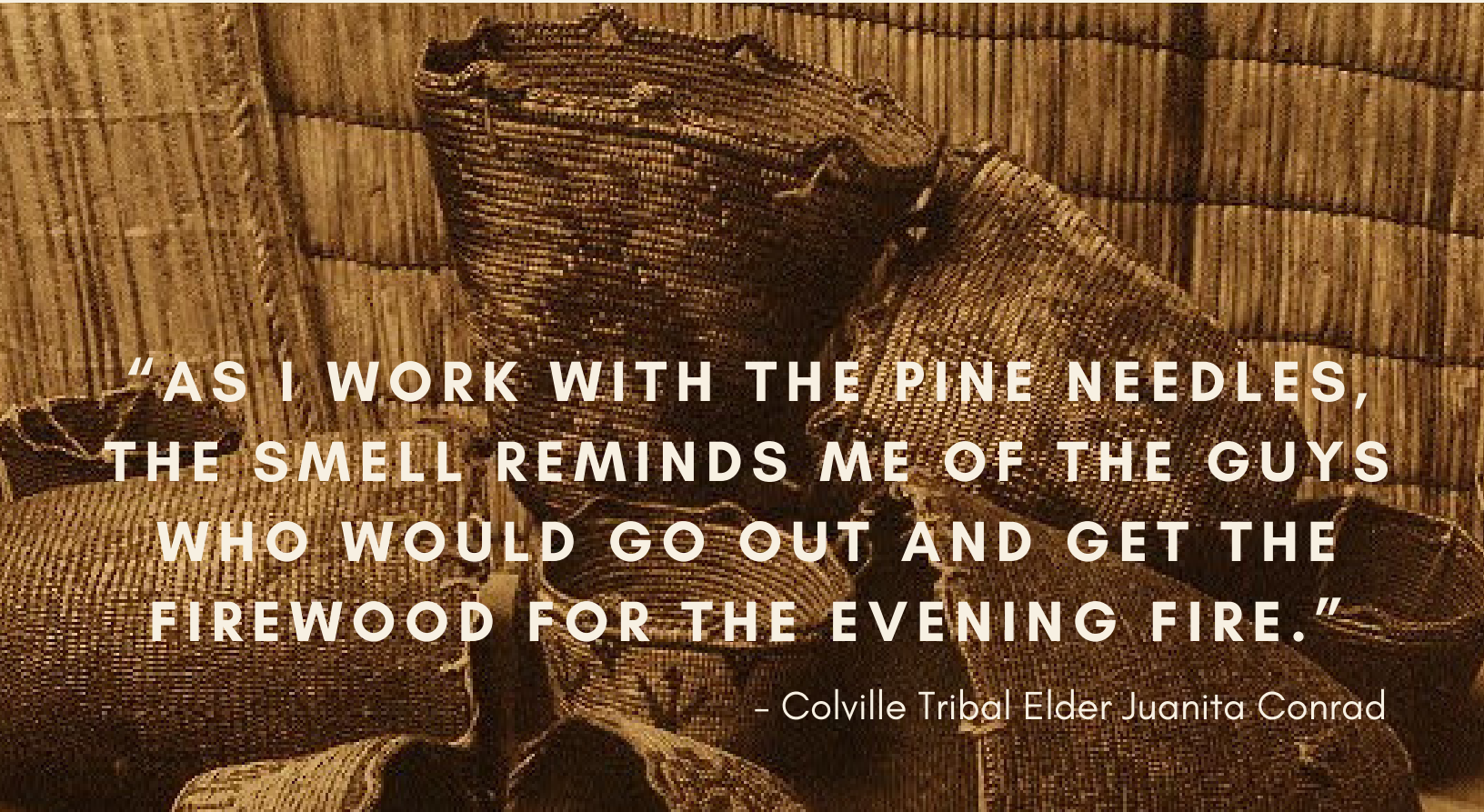
BASKET WEAVING WORKSHOP 11/3 & 11/4, 9 - 3:30PM

Colville tribal member and master basket maker Juanita Conrad leads a two-day retreat-style workshop in the traditional craft of pine needle basketry.

A love of the outdoors inspires Conrad's work and all of her baskets are made from locally sourced pine needles found in the ponderosa forest near her Inchelium home. Conrad does not keep careful track of her pieces, but she knows that some of her baskets have made it as far away as France, with several scattered across the United States in private collections. Her creations range from the practical umbrella stand to the whimsical cup and saucer.

The museum-sponsored workshop will take place in a private home with sweeping views of the valley. Guests are invited to unplug and reconnect with the natural world in a relaxed environment designed to nurture learners at any level. For Conrad, working with the natural materials is a reminder of a childhood of roaming the outdoors.

The retreat is limited to 6 individuals. All materials and supplies are provided and all skill levels and experience are welcome. Lunch is included. Cost is \$250 per person.



**"AS I WORK WITH THE PINE NEEDLES,
THE SMELL REMINDS ME OF THE GUYS
WHO WOULD GO OUT AND GET THE
FIREWOOD FOR THE EVENING FIRE."**

- Colville Tribal Elder Juanita Conrad



2018 SSA CLASS REGISTRATION

WENATCHEE VALLEY MUSEUM & CULTURAL CENTER

127 S. Mission Street, Wenatchee, WA 98801

Check (payable to WVMCC), credit card, or cash (delivered) accepted. Please list each child on a separate form.

Student Name: _____ Entering grade: _____ Current School: _____

Parent/Guardian: _____ Email: _____

Address: _____

City: _____ State: _____ Zip: _____

Phone: _____ Alternate Phone: _____

Emergency Contact: _____ Phone: _____

Allergies or any other issues we should know about? _____

BEHAVIOR ACKNOWLEDGEMENT

The Super Summer Adventure teaching staff strive to provide a happy, safe, spirited summer of learning and enrichment for all ages. To ensure this expectation is honored, all camp participants are required to sign a behavior contract at the time of enrollment. This contract emphasizes cooperation and respect for fellow students, teaching staff, the teaching environment and museum property. A parent or guardian will be contacted if a camper engages in disrespectful, uncooperative or threatening behavior, destructiveness or improper physical contact with others. Staff will generate a written report in the event of a second and third incident. Immediate dismissal from the program can occur at any time depending on the severity of the circumstances. No refunds will be issued for dismissal from camp as a result of a violation of the behavior contract.

Signature of Parent/Guardian _____

SESSION REGISTRATION

Session #	Class Name	Fee

Total Fee: \$

Name on Card: _____ Date: _____ o Visa o MasterCard

Credit Card # _____ Exp. Date: _____ 3-Digit Code: _____

* Some camps have special fee schedules due to advanced content or limited space. See specific catalog description for details.



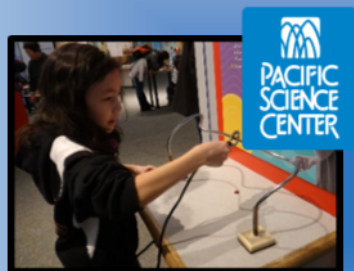
Nonprofit
U.S. POSTAGE
PAID
Permit No. 422
Wenatchee, WA
98801

127 S. Mission
Wenatchee, WA 98801
(509) 888-6240
www.wvmcc.org

Or Current Resident

BECOME AN EXPLORER!

Gain membership benefits to hundreds of museums, art galleries, science and technology centers and children's museums with your premium membership!



Find out more by calling (509) 888-6240 or visiting us online at
www.wenatcheevalleymuseum.org/membership